

Commander's Low Water Brief

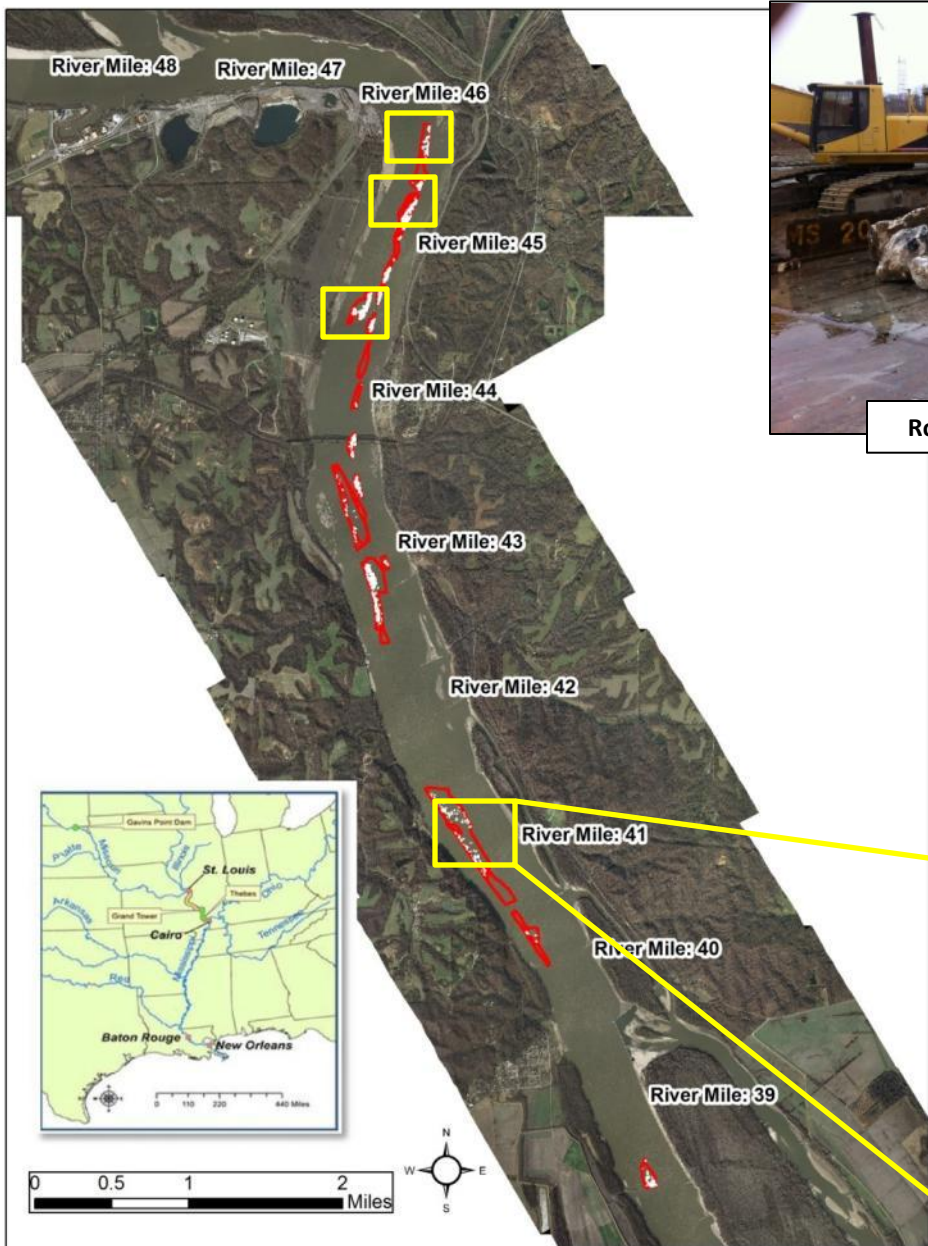
14 January 2013



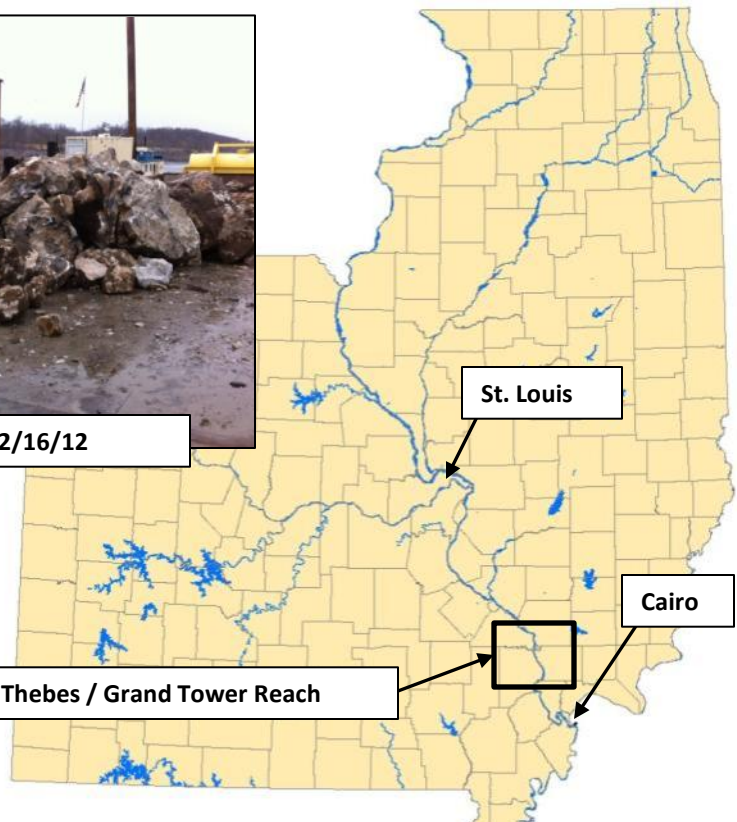
®



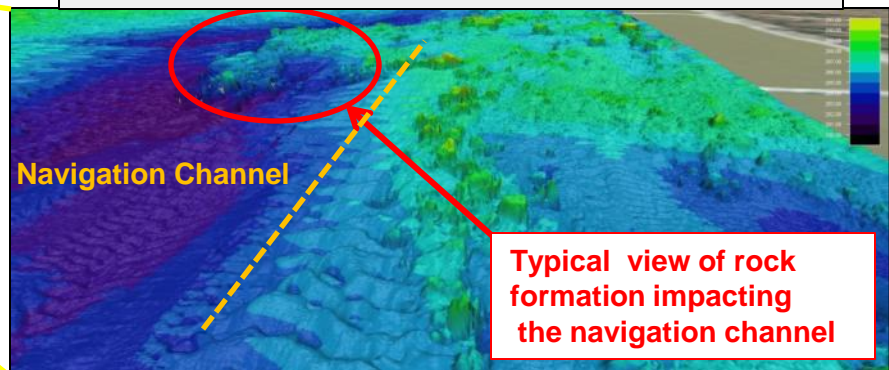
Rock Pinnacle Removal



Rock Removed 12/16/12



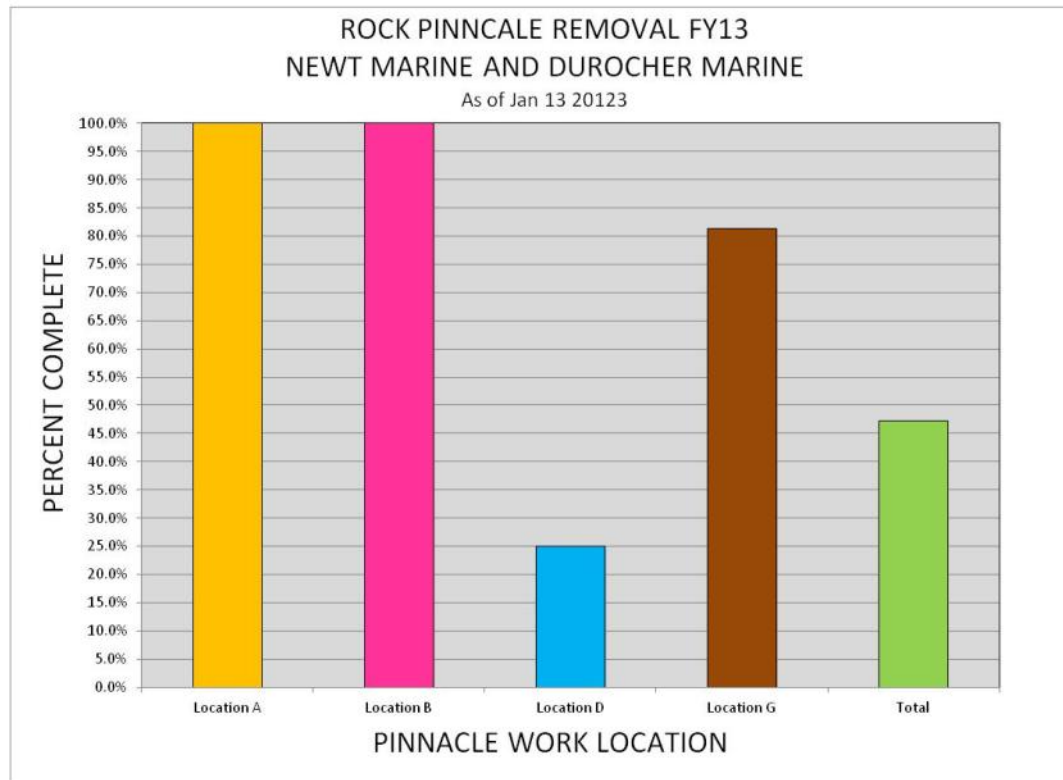
DS View - Rock Pinnacles near River Mile 41, Thebes, IL



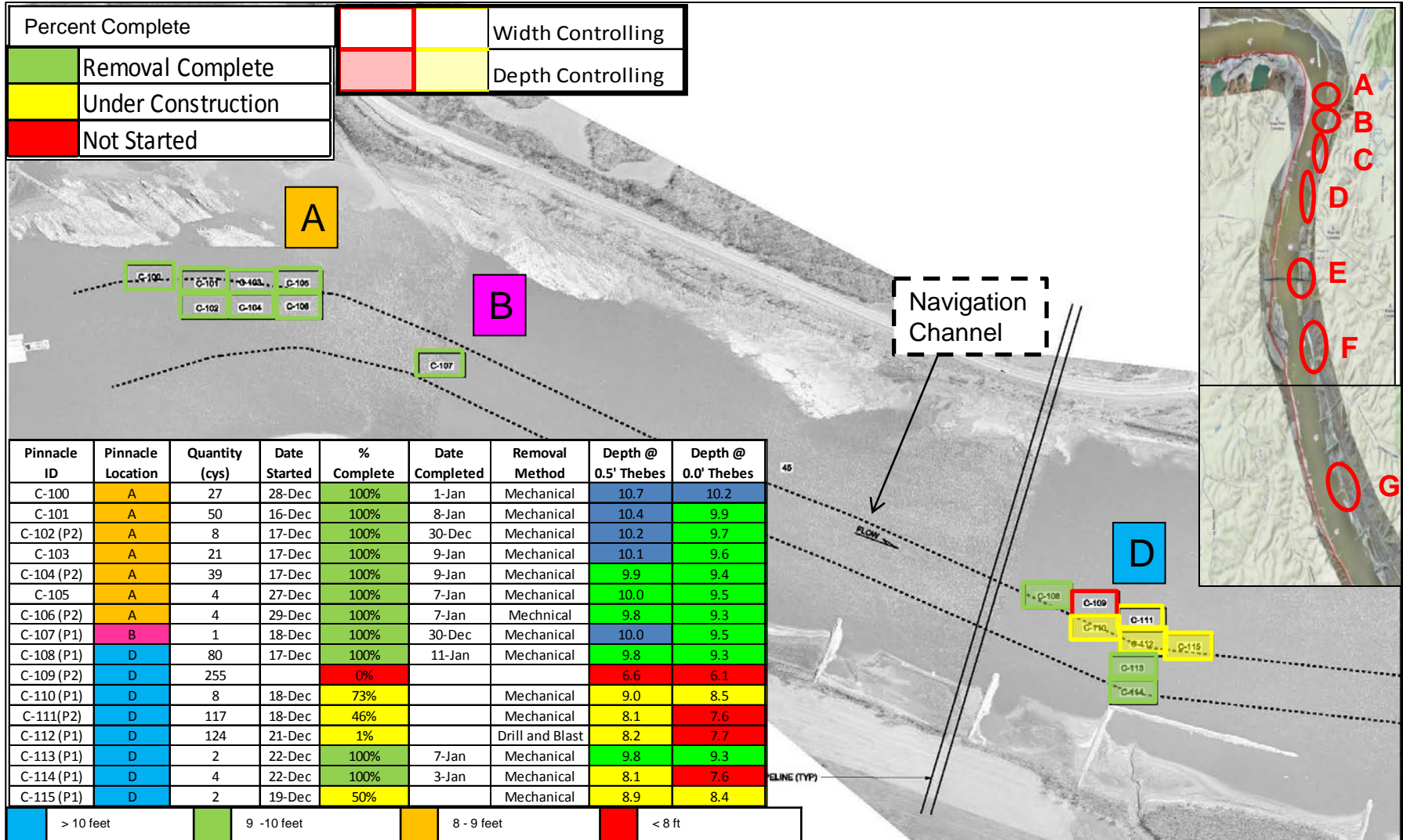
Thebes Rock Removal Summary

Phase 1 Contracts (As of 2200 1/13/2013)

Contractors	Work Locations	Total Cubic Yards	Cubic Yards Removed	Percent Removed	Dimension Increased
Newt	Location A	154	154.0	100.0%	Width – 250' increase on 9-Jan
	Location B	1	1.0	100.0%	Width – 150' increase on 31-Dec
	Location D	592	147.8	25.0%	Depth - 2' increase on 10-Jan Width - 170' increase on 10-Jan
Durocher	Location G	145	118	81.4%	Depth - 2' increase on 10-Jan Width - 300' increase on 10-Jan
Project Completion	Total	892	420.9	47.2%	

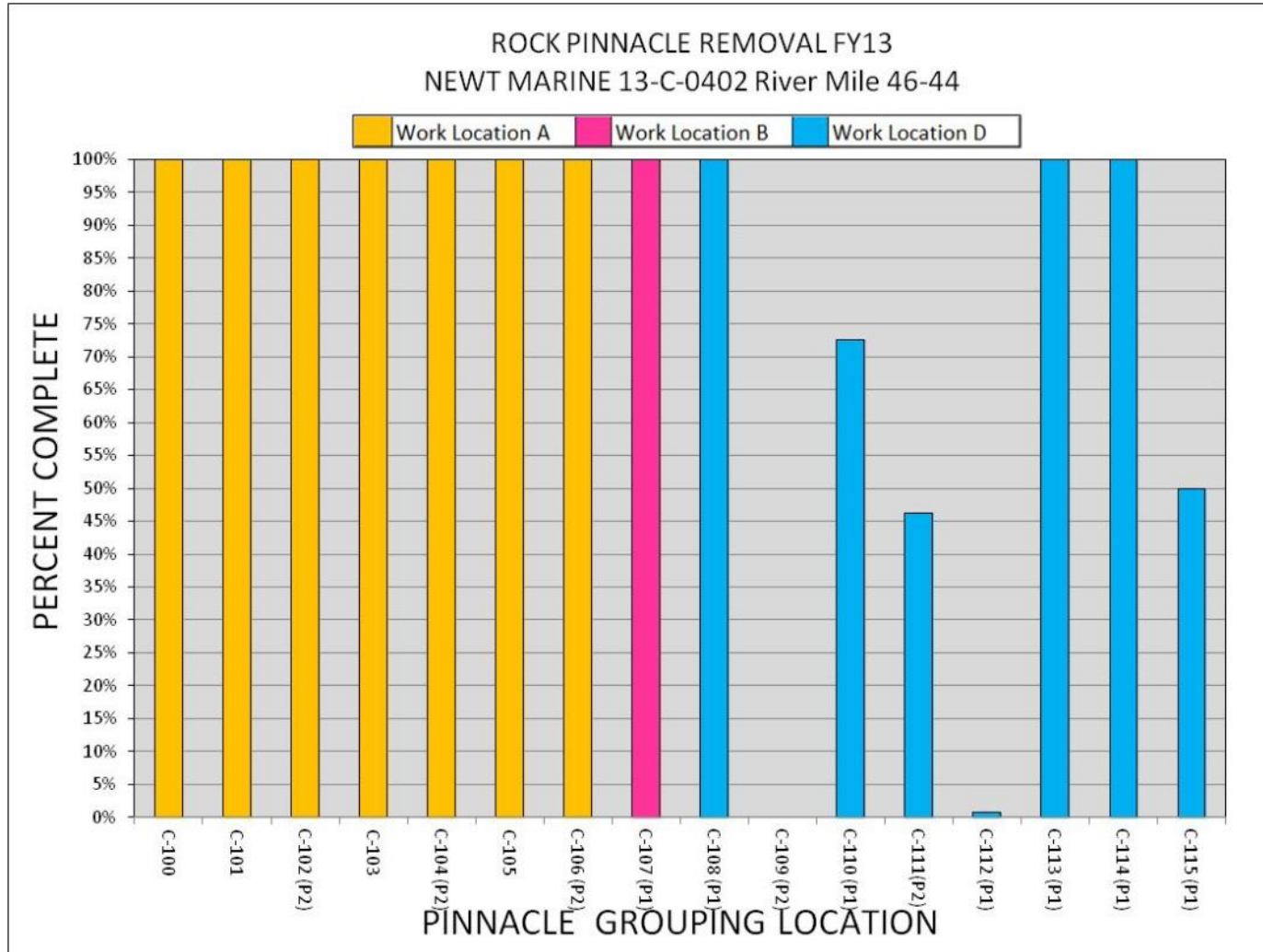


Critical Sites A, B, D Thebes River Miles 46-44 Newt Marine Update (As of 2200 1/13/2013)



> 10 feet	9 - 10 feet	8 - 9 feet	< 8 ft

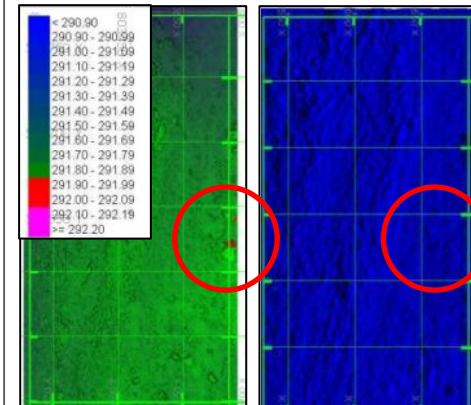
Critical Sites A, B, D Thebes River Miles 46-44 Newt Marine Update (As of 2200 1/13/2013)



Newt Hydro Hammer



Newt Second Blast C-112

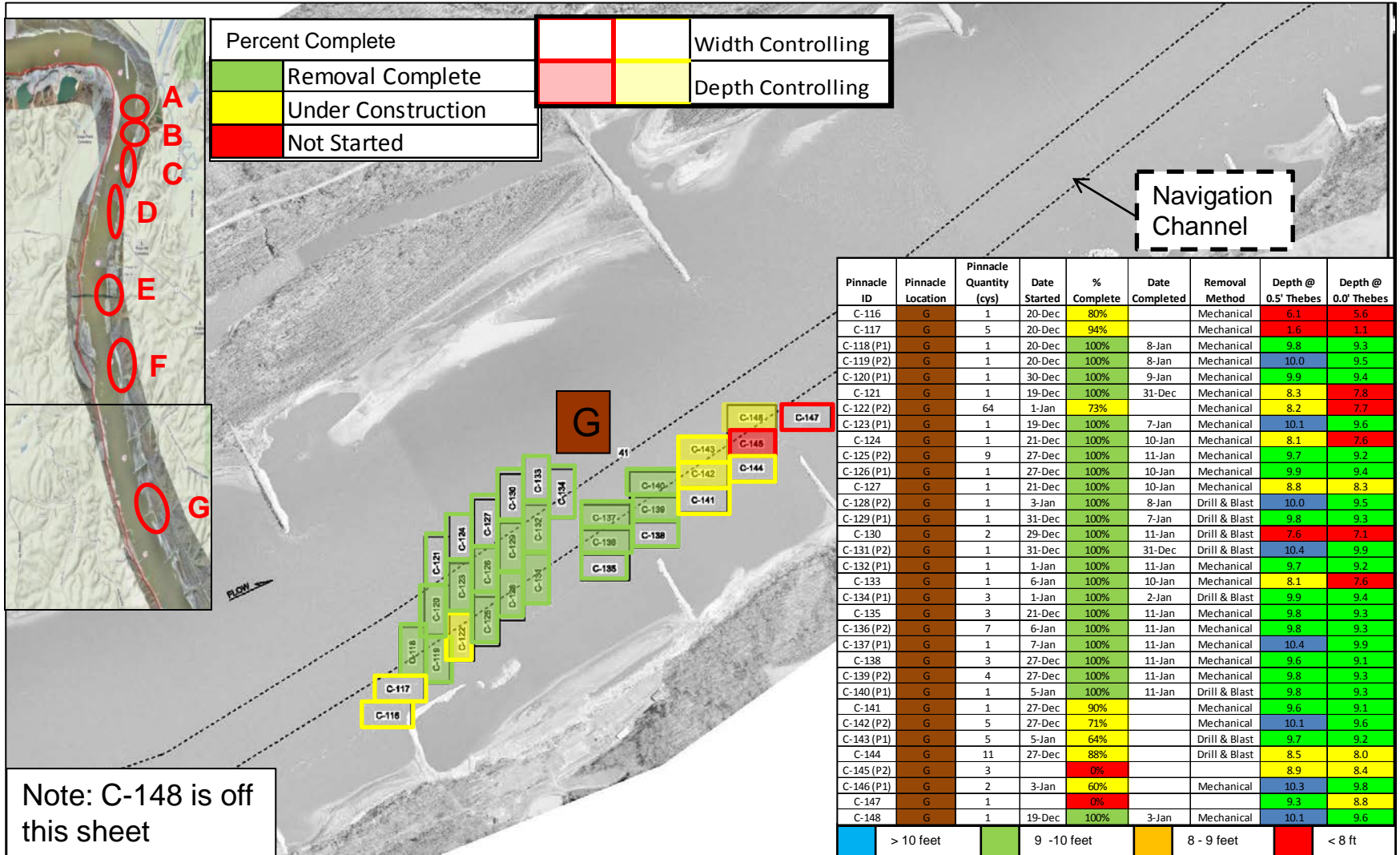


Post & Final Removal
Survey C-102

Critical Sites G Thebes

River Mile 41

Durocher Marine (Kokosing) Update (As of 2200 1/13/2013)

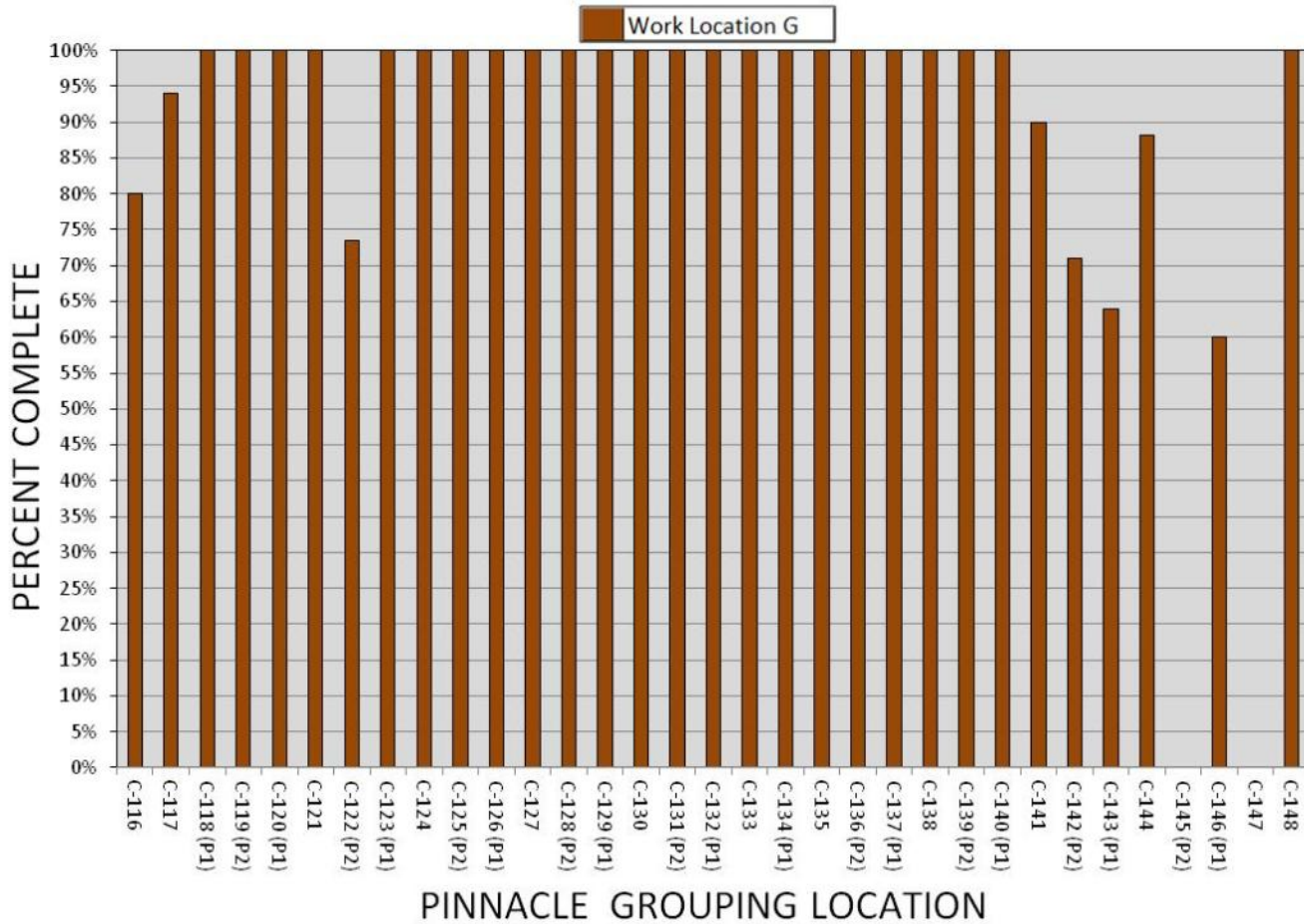


Critical Sites G Thebes

River Mile 41

Durocher Marine (Kokosing) Update (As of 2200 1/13/2013)

ROCK PINNACLE REMOVAL FY13
DUROCHER MARINE (KOKOSING CONST)13-C-0403 River Mile 41

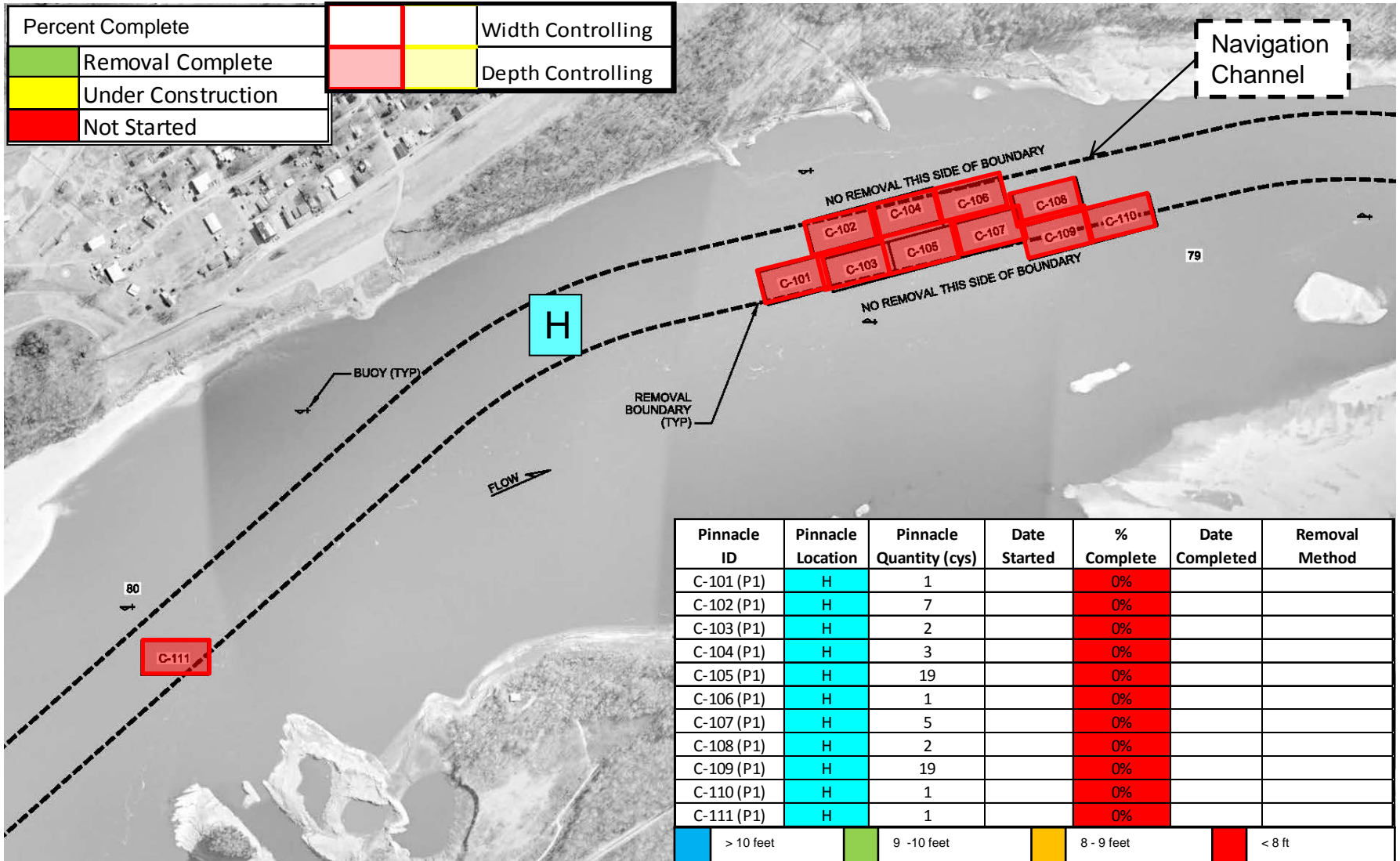


Durocher Rock Removal



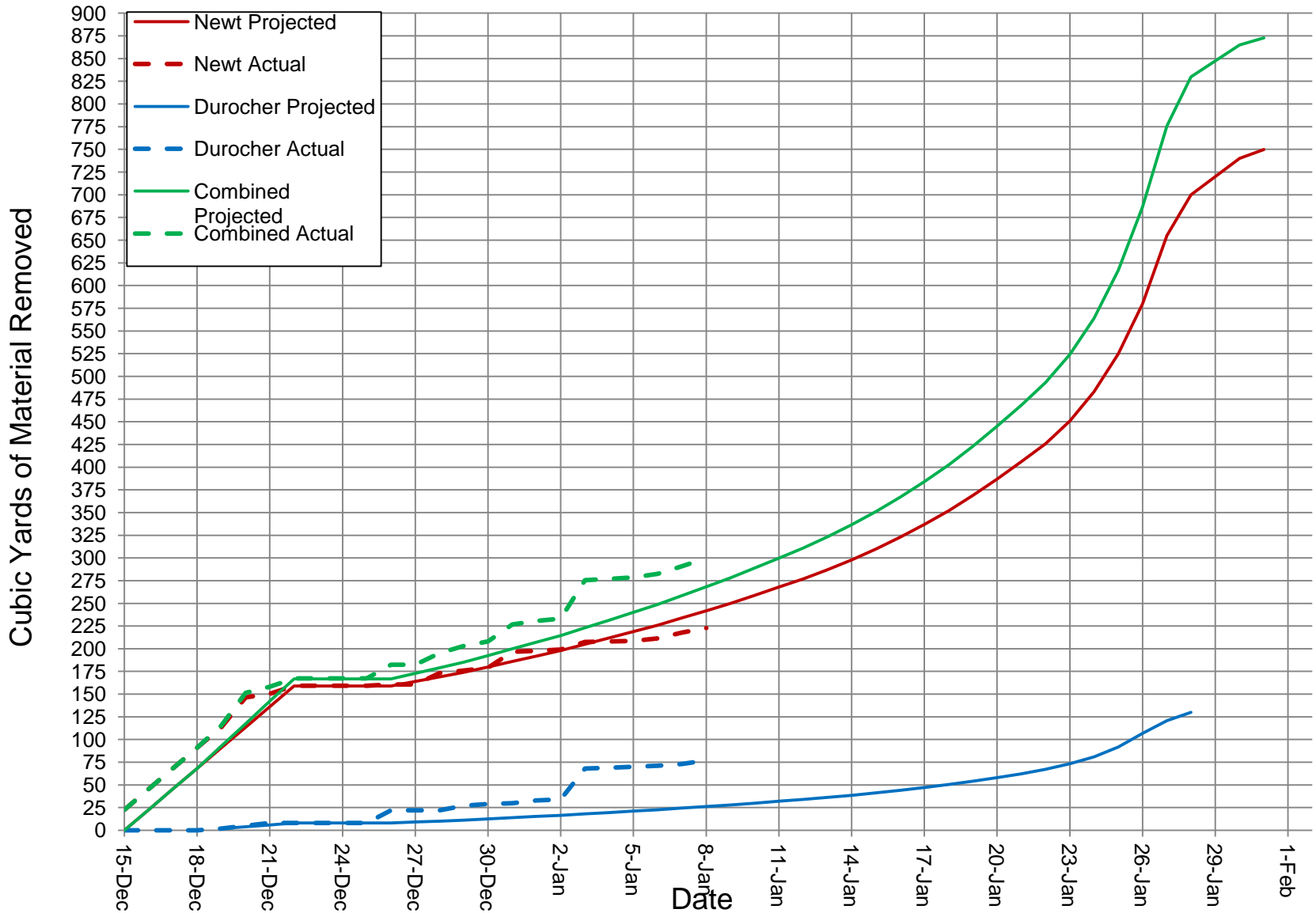
Durocher Crane 4.5 CY Budget & 14 Ton Grapple

Critical Site H Grand Tower River Miles 80-79 Newt Marine Update (As of 2200 1/13/2013)



Rock Removal Production Rates

As of 2200 on 08 January 2013



Navigation/Queue Management

(As of 0700 01/09/2013)

Queue at Locks 27 as of 0700				Queue at Thebes Reach as of 0600			
Main Lock closed 10 Dec – 1 Mar				Pinnacle Removal			
Current NB:	3	Past 24 NB	2	Current NB	2	Past 24 NB	3
Current SB:	0	Past 24 SB	0	Current SB	0	Past 24 SB	0
Locked Last 24 Hrs: 5 NB, 2 SB				Passed in Past 8 Hrs: 8 NB, 7 SB			
Open		<4 Hour Closure		>4 Hour closure			

MVS Channel Conditions

MVD River Conditions on 8 Jan and 5 Feb 2013 Forecast

Harbor (*DATE ADDED)	River Mile	Survey Date	Controlling Depth	Gage Reading	Gage Location	28-day Depth	28-day Gage	Last Dredged	Remarks - Schedule
Flora Creek *8 JAN	55.5	05-Jan	11.8	5.4	Cape Girardeau	8.9	2.5	Oct 19	Potter - In Transit - ECD 10 JAN
Vancill Landing *8 JAN	67.5	05-Jan	11.4	5.4	Cape Girardeau	8.5	2.5	Aug-12	Potter - ECD 11 JAN
Little Rock Landing *27 DEC	125.0	04-Jan	10.7	-4.2	Brickeys	8.0	-6.9		Potter - ECD 16 JAN
Establishment *27 DEC	130.0	04-Jan	11.5	-4.2	Brickeys	8.8	-6.9		Potter - ECD 18 JAN
Brickeys Landing *27 DEC	136.0	18-Dec	12.1	-4.2	Brickeys	9.4	-6.9	NONE	Potter - ECD 21 JAN
Manskers *9 JAN	103.0	06-Jan	12.9	-0.7	Chester	10.0	-3.6	Oct 12	Potter - ECD 25 JAN
Cherokee Landing *9 JAN	113.0	07-Jan	11.6	-0.7	Chester	8.7	-3.6	Nov-07	Potter - ECD 27 JAN
Riverways *9 JAN	173.0	31-Dec	11.3	-4.0	St. Louis	8.8	-6.5	Nov-11	Potter - ECD 30 JAN
Thebes (location D) CG Fund	44.5	02-Jan	11.0	3.9	Thebes	8.0	0.9		Hurley - delayed, pending P.D Surv
Thebes (O&M)	44.5	02-Jan	11.0	3.9	Thebes	8.0	0.9		Hurley - Dredging - ECD 11 JAN
Thebes (O&M)	42.6	02-Jan	12.6	3.9	Thebes	9.6	0.9		Hurley - ECD 12 JAN
Thebes (O&M)	40.5	02-Jan	12.6	3.9	Thebes	9.6	0.9		Hurley - ECD 14 JAN
Thebes (O&M)	40.0	02-Jan	13.2	3.9	Thebes	10.2	0.9		Hurley - ECD 15 JAN
Burnham Island	39.7	02-Jan	13.3	3.9	Thebes	10.3	0.9		Hurley - ECD 17 JAN
Thebes (O&M)	39.0	02-Jan	12.4	3.9	Thebes	9.4	0.9	Aug 12	Hurley - ECD 19 JAN
Thebes (O&M)	38.4	02-Jan	12.7	3.9	Thebes	9.7	0.9		Hurley - ECD 20 JAN
Thebes (O&M)	38.0	02-Jan	12.1	3.9	Thebes	9.1	0.9		Hurley - ECD 21 JAN
76 Light *9 JAN	91.0	07-Jan	12.2	3.8	Grand Tower	9.4	1.0		Hurley - ECD 25 JAN
Roman Landing *9 JAN	95.5	06-Jan	12.3	3.8	Grand Tower	9.6	1.0	Dec-06	Hurley - ECD 27 JAN
Potato Bend *9 JAN	97.0	06-Jan	12.3	3.8	Grand Tower	9.6	1.0	Nov-10	Hurley - ECD 28 JAN

Location	Current	Week 1	Week 2	Week 3	Week 4
	08-Jan	15-Jan	22-Jan	29-Jan	05-Feb
St. Louis	-4.0	-3.7	-5.1	-5.9	-6.5
Brickeys	-4.2	-4.0	-5.7	-6.4	-6.9
Chester	-0.7	-0.6	-2.6	-3.2	-3.6
Grand Tower	3.8	4.0	2.2	1.4	1.0
Cape Girardeau	5.4	5.5	3.8	3.0	2.5
Thebes	3.9	3.9	2.2	1.4	0.9
Birds Point	18.4	11.1	9.6	8.8	7.5
Ohio River at Cairo	22.3	14.8	12.8	11.8	10.4

 Greater than 11 ft depth
 9-11 ft depth
 Less than 9 ft depth

Dredging to Approx -7.0 on the STL / 0 on Thebes Gauge

**Dredge Potter – ECD 30 JAN
Dredge Hurley – ECD 28 JAN
Dredge Jadwin – TBD**

MVS Channel Conditions

Harbor (*DATE ADDED)	River Mile	Survey Date	Controlling Depth	Gage Reading	Gage Location	28-day Depth	28-day Gage	Last Dredged	Remarks - Schedule
Cottonwood	78.0	08-Dec	12.5	3.8	Grand Tower	9.7	1.0		Likely rock related to Grandtower
Neely Landing	70.8	27-Aug	14.3	5.4	Cape Girardeau	11.4	2.5	Aug-12	Watch, Curr >=9' @-7 STL
Hat Island	87.0	09-Dec	13.2	3.8	Grand Tower	10.4	1.0	Nov 7	Watch, Curr >=9' @-7 STL
Beaver Island	115.4	28-Nov	12.5	-0.7	Chester	9.6	-3.6	NONE	Watch, Curr >=9' @-7 STL
City Docks	181.5	22-Dec	12.0	-4.0	St. Louis	9.4	-6.5	Nov-05	Watch, Curr >=9' @-7 STL
Daniels Landing	31.0	06-Dec	13.6	3.9	Thebes	10.6	0.9		Watch, Curr >=9' @-7 STL
JB Bridge - below	168.0	14-Dec	11.9	-4.0	St. Louis	9.4	-6.5	Aug-06	Must Buoy/Watch, >9' @ -7 STL
Street Oil *31 DEC	171.0	22-Dec	14.1	-4.0	St. Louis	11.5	-6.5	Oct-11	Post Dredge - continue to watch
Chester	110.5	07-Jan	13.6	-0.7	Chester	10.7	-3.6	Nov-07	Post Dredge - continue to watch
Farmers Landing	115.5	07-Jan	12.5	-0.7	Chester	9.6	-3.6	SEP 2012	Post Dredge - continue to watch
Hanging Dog *31 DEC	69.5	30-Dec	14.8	3.8	Grand Tower	12.0	1.0	Oct 26	Post Dredge - continue to watch
Moro Island *31 DEC	119.0	27-Dec	13.3	-0.7	Chester	10.4	-3.6	Sep-12	Post Dredge - continue to watch
Sliding Towhead *4 JAN	24.4	06-Dec	19.0	3.9	Thebes	16.0	0.9	Nov-10	Removed from sched - new surv.
Hurricane Light	11.3	13-Nov	25.0	18.4	Birds Point	14.1	7.5		Watch, Curr >=9' @-7 STL
Scudder Lower	15.0	06-Dec	25.3	18.4	Birds Point	14.4	7.5	Sep-09	Watch, Curr >=9' @-7 STL
I-57 Bridge	7.4	16-Aug	25.7	18.4	Birds Point	14.8	7.5		Watch, Curr >=9' @-7 STL
Stevenson Light	5.0	13-Nov	25.9	18.4	Birds Point	15.0	7.5		Watch, Curr >=9' @-7 STL
Birds Point	2.0	07-Dec	25.6	18.4	Birds Point	14.7	7.5	Oct-08	Watch, Curr >=9' @-7 STL

- Watch list – 18

- 13 of these locations will have greater than 9' of water depth at -7 STL / 0 Thebes gage. (1 must be buoyed, 1 is likely rock pinnacle)
- 5 locations are near Cairo and will have at least 12' of water depth in the current 28 day, no rain forecast.

COMMANDERS' GUIDANCE & CLOSING REMARKS

9 January 2013



®

